

They had their funeral services at the Congregational Church (now St Davids Uniting –cnr Olive and Wilson Streets) of which he was a co- founder. Both are buried in the Congregational section of the Albury Pioneer Cemetery, Row A, plots 31/32. Sarah and her parents are named on grave 31, whilst baby Catherine and Ada Annie are at plot 32. Margaret and Ellen, who both died in their infancy are not mentioned here, and must be buried elsewhere.

Their eldest daughter Sarah Paine married twice. In 1885 to John Lees (of whom we know nothing) and to Edward Barry in 1888. Edward appears on the 1899 Federal Referendum Roll as living at 77 Bourke St Melbourne which has living quarters above a chemist shop. He also appeared on James and Ada White's wedding certificate in 1915 as a chemist living in Sydney. We have no other information about him leaving a mystery as to when and where he died.

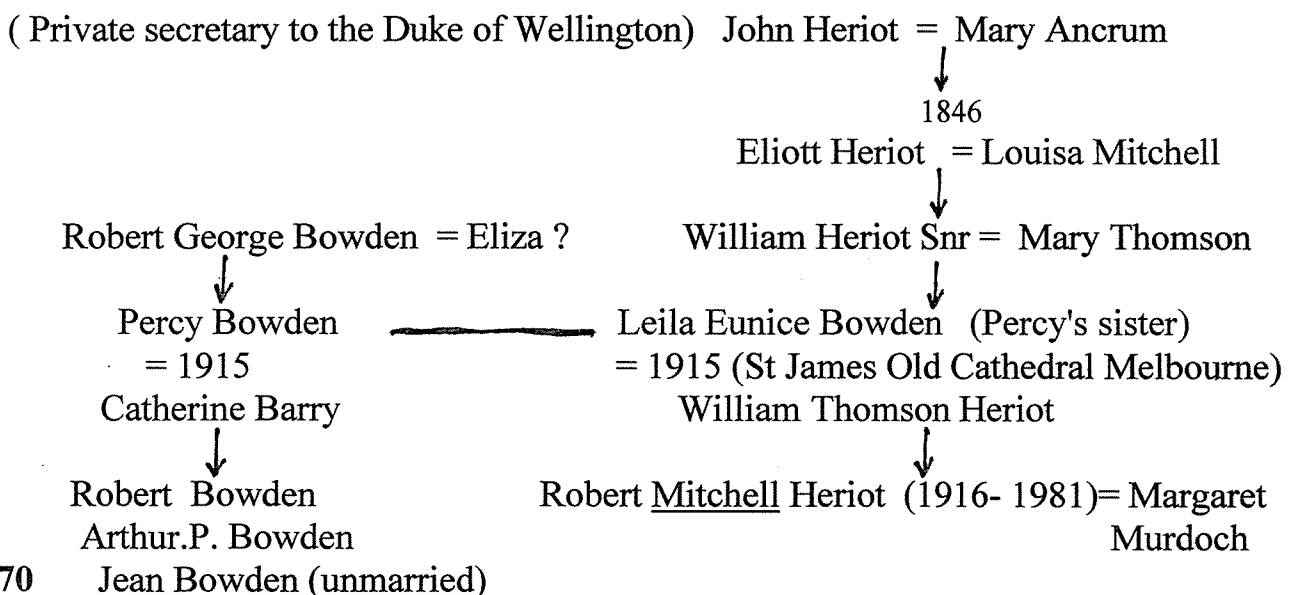
Sarah dies of pneumonia in 1894 at 31 years of age leaving two daughters and a son The young children Edward, Ada Emily and Catherine 'Kit' Barry lived with their Grandparents in Sackville St. and they were largely reared by their spinster aunt Ada 'Annie' Paine.

Sarah's two brothers Brigadier General J.J.'Dick' Paine C.B.E (1864-1936) and Major Haille Bennington Paine (1870- 1941) apart from having distinguished Army service careers, forged their professional lives in the law. 'Dick' at Windsor N.S.W, and Sydney. and Haille at Moss Vale and Bowral N.S.W

Sarah's eldest child Edward David Barry (21/1/1889) – c 1968 married Ethel Mary Uhd in 1917 at the Congregational Church Collins St Melbourne and had four children Elaine (Arizona U.S.A), John, Helen and Margaret (Mainprize). Edward worked for J.C. Williamson theatrical company as an advertising agent.

Her youngest child Catherine (Kit) Jean Barry (1892- 1970) married Percy Robert Bowden (1888-1952) at the Congregational Church in Albury 25/5/1915

THE HERIOT-BOWDEN-PAINE connection

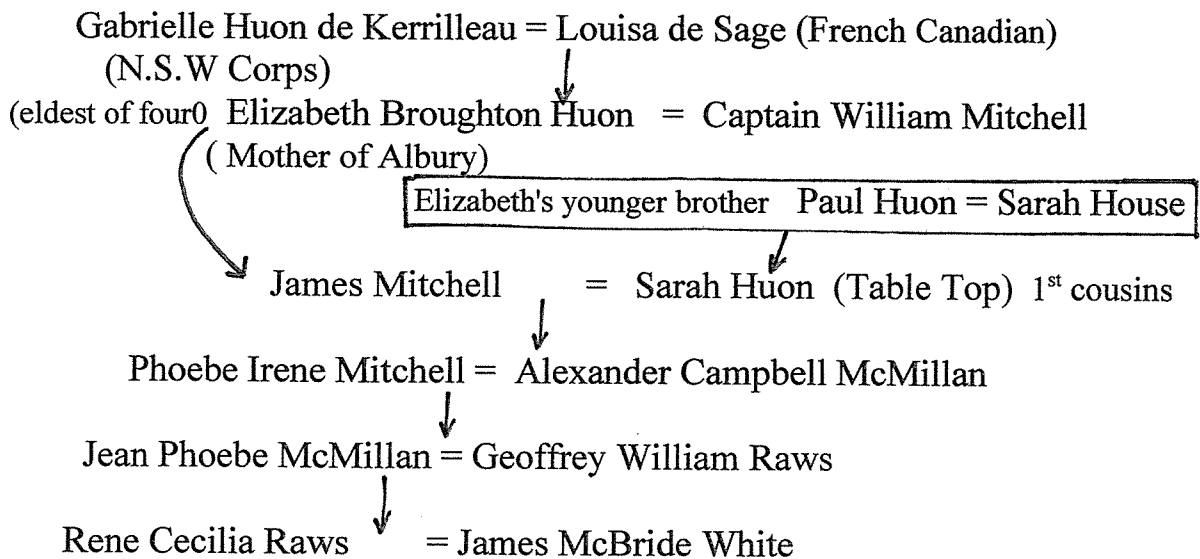


Great aunt 'Kit' lost her two boys in the second World War: Robert (1916-1942) who was a pilot and crashed in South Africa, and Arthur.P Bowden (1918-1944) who was a gunner in Europe. Both are remembered at the War Memorial Albury on plaques unveiled 21/4/1996. The monument itself was opened by their great uncle Brigadier- General J.J.Paine in 1925 on Anzac Day.

THE MITCHELL=HUON-HERIOT connections

William Heriot Senior's father Eliott who arrived in Australia at Port Jackson in 1841 aboard the "Nimrod" and married Louisa, a daughter of James Mitchell and Sarah Huon (de Kerrilleau) at "Mungabreena". This relates Rene White distantly to Bob Heriot, who was a second cousin of Dr James McBride White through the Bowdens. Eliott took up "Carabobala" in about 1842 probably in a land trade. He had been managing "Dora Dora" previously. (see Map in Chapter 12) and had had an interest in 'Barrabang', Cape Schanck Victoria before that.

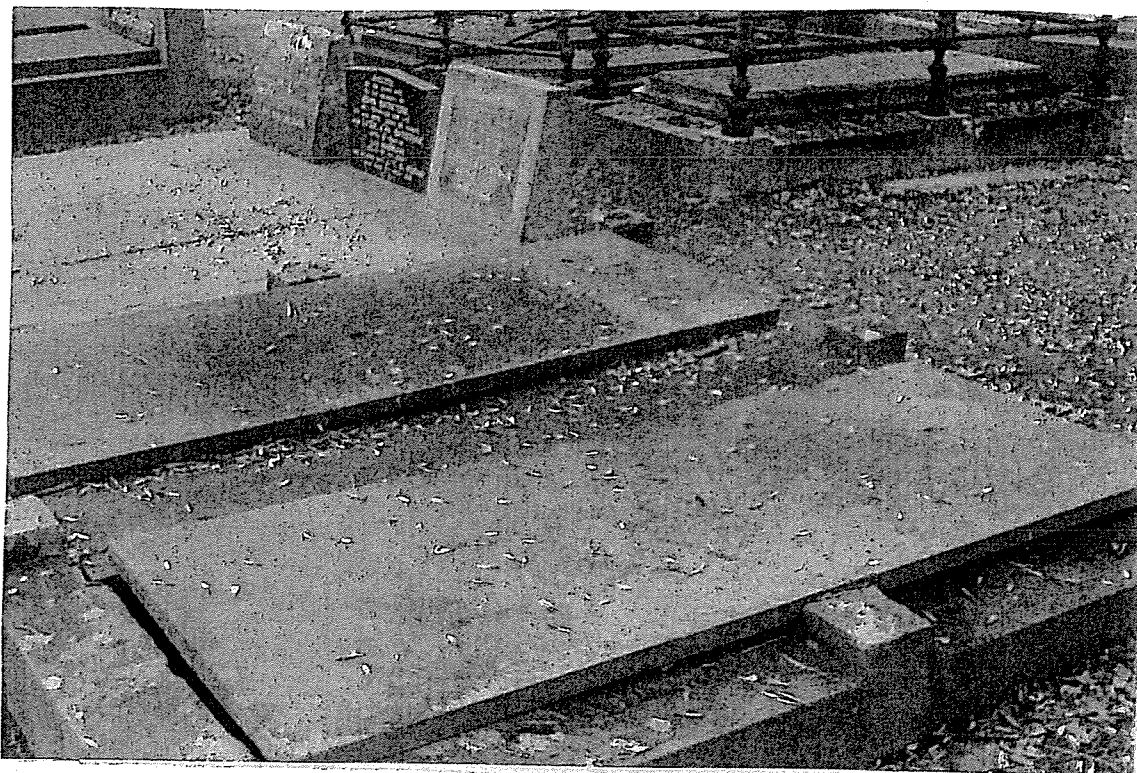
The two Heriot brothers Ancrum and Eliott married two Mitchell sisters (Agnes and Louisa) from "Mungabreena" {now Albury township} where their mother Elizabeth Mitchell had settled after moving from Bungonia near Goulburn. The girls youngest brother James Mitchell married his first cousin Sarah Huon {Elizabeth's brother Paul's daughter}, and they lived on the fabled merino sheep grazing property "Tabletop" between Albury and Holbrook. One of their daughters Phoebe Irene married Alexander Campbell McMillan from the 'Hazelwood Run ', Churchill in Gippsland Victoria. Their only daughter Jean married Geoff Raws, who was managing "Wanganella" near Deniliquin N.S.W. His father was the well known industrialist Sir Lennon Raws.



Gabrielle and Louisa probably met soon after her arrival on the “Indispensible” in 1796. They ultimately both are in the employ of John MacArthur at “Elizabeth Farm “Camden in 1807. He, as a tutor to the sons and she as a housekeeper. At the same time he was granted 100 acres at Fairfield . Later 400 acres at Minto where he built an historic house part of which is called “Gledswood” today

It is interesting to note that the explorer Hamilton Hume's father Andrew was given a land grant of 100 acres at Appin. by Governor Macquarie, in about 1812. Andrew built a house on a later holding of 150 acres “Hume Mount Farm”, {6 miles from Campbelltown} which looked down on the Nepean River and towards Camden. It is currently called “ Meadow Vale Farm”.

The Humes and the Huons were heavily inter-married. (see “Beyond the Borders; by Stuart Hamilton Hume ISBN 0 646 04139 8) e.g. Elizabeth Broughton Mitchell's (nee Huon) eldest daughter Emma married the aforementioned Andrew Hamilton Hume's youngest son Francis Rawdon Hume in 1830 . I wonder if there was any interaction with John Bray of “Denfield Park' on the Appin Way, two miles south of Campbelltown. (see Aiken connection). Francis was the explorer's youngest brother. The township of APPIN dates to 1811.



PAINE Grave in Albury Pioneer Cemetery
Main Row -Presbyterian Section